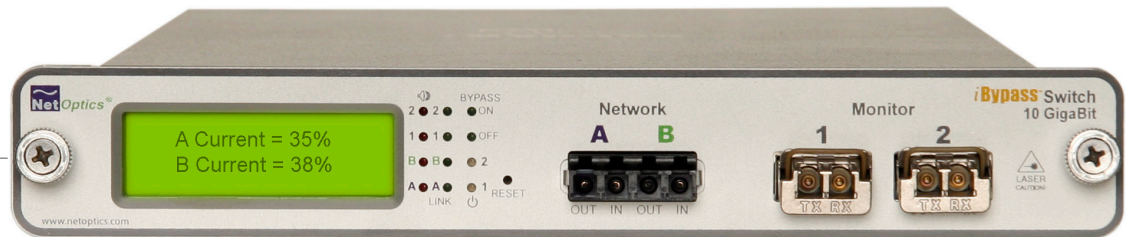


Net Optics Intelligent Products

10 Gigabit iBypass Switch



intelligent bypass switch

10 GigaBit iBypass Switch

- Enables secure monitoring with any in-line appliance
- Protects against downtime due to power, link, and application failure
- Maintains link integrity during IPS redeployments and upgrades

Information

- Graphical display of link status, utilization, and connections
- LEDs indicate power, link and activity status

Security and Control

- Disable remote interfaces from a password-protected CLI
- Control all iBypass Switches in your enterprise with easy-to-use GUIs

Access

- Web Manager offers complete user interface on one page
- System Manager gives control and access to multiple iBypass Switches
- Compatible with third-party SNMP management tools

Ease of Use

- Redundant power ensures monitoring uptime
- Tested and compatible with all major manufacturers' intrusion detection and prevention systems
- XFPs provide users with flexible configuration options

Net Optics 10 GigaBit iBypass Switch with Heartbeat technology protects against power, link, and application loss. The iBypass Switch features remote interfaces that allow remote switching and provide access to baseline traffic statistics, including utilization levels from anywhere in the network.



Heartbeat Technology

The Optical Bypass Switch with Heartbeat monitors the link to the attached in-line device by sending a programmable heartbeat packet to the device once every second. If the Optical Bypass Switch does not receive the heartbeat back, it automatically switches network traffic to bypass the unresponsive device, even if the device is still receiving power. The Optical Bypass continues to send programmable heartbeat packets and restores traffic through an in-line device as soon as heartbeats are again returned.

Visual Indicators

A digital display and alarm LEDs provide quick confirmation that utilization levels are not exceeding the capacity of either the monitoring device or a pre-determined threshold. From the display, you can view current bandwidth utilization of each side of a full-duplex link, along with the size and time of the highest peak since the last reset. After taking action on a utilization or peak event, reset the data from a button on the front panel or from a remote interface.

The iBypass Switch is then ready to detect and display the next critical peak event.

Remote Control

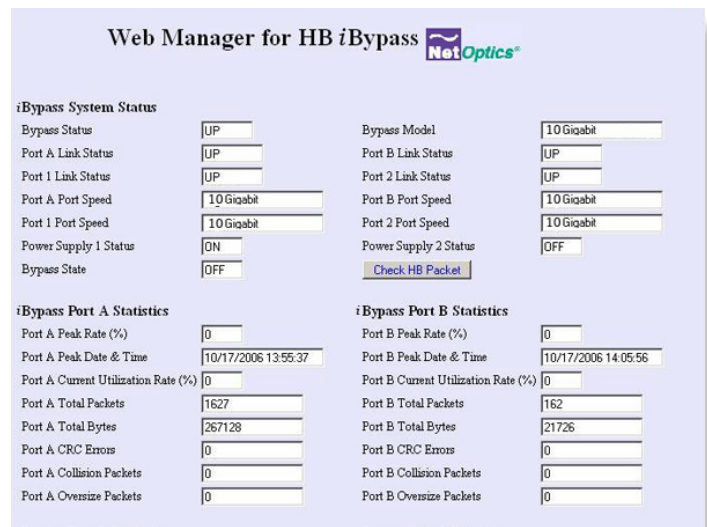
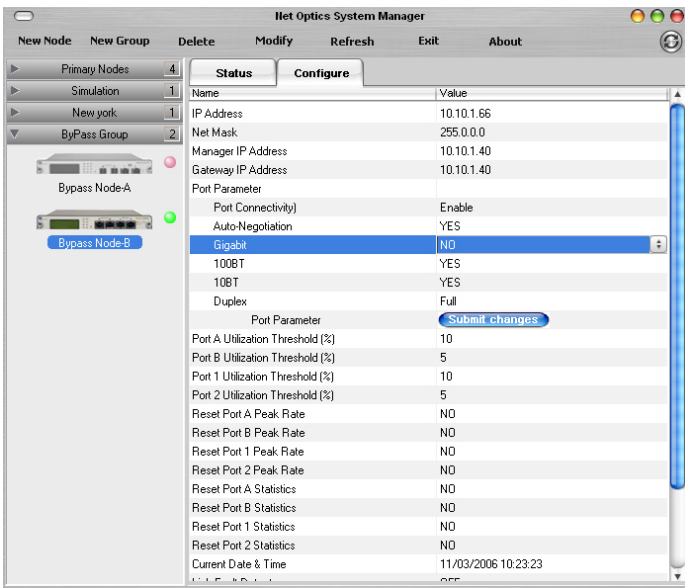
The iBypass Switch Web Manager and System Manager allow you to remotely set parameters, view status information, and monitor traffic data on one or more switches. These interfaces provide security and performance information such as the number of over- and under-sized packets, and CRC errors. You can remotely set the alarm thresholds, clear the traffic data counters, and turn on or off a Monitor Port.



The Web Manager is a browser-based interface accessible from any PC with a browser and access to the iBypass Switch's IP address. System Manager is a management interface designed to monitor multiple switches using SNMP. The RS232 command line interface (CLI) is provided for initial setup.

Web Manager

Net Optics Web Manager allows you to change settings, view status, and change port connections on one switch using simple-to-use controls. All you need is the IP address of the switch. When you access an iBypass Switch with Web Manager, all configuration, status, and port connection information is displayed on a single page. Changes to the configuration can be made with a few clicks of the mouse.



Access and control the iBypass Switch using a web browser

10 GigaBit iBypass Switch System Manager

System Manager

Net Optics System Manager is a management tool that offers central management of all Net Optics iBypass Switches in the network. iBypass Switches can be organized into groups according to workgroup, location, or any other criteria. As with Web Manager, you can view status information and change configuration options. iBypass Switches can be fully accessed with third-party SNMP management tools after loading Net Optics' Management Information Base (MIB) file.

SNMP

Uninterrupted Traffic

As long as the iBypass Switch is receiving power, it diverts network traffic to attached in-line devices. In this state, all in-line traffic is routed directly to the device connected to the iBypass Switch. When power is lost, Fast Path maintains network link integrity with high-speed switching.

When the iBypass Switch loses power, in-line traffic continues to flow through the network link, but is no longer routed through the device. This allows the network device to be removed and replaced without network downtime. Once power is restored to the iBypass Switch, network traffic is seamlessly redirected to the in-line device, allowing it to resume its critical functions. For convenience, iBypass Switch keeps a count of dropped packets, and provides vendor-specific packet numbering as a means to reorder packets if problems occur.

Specifications

Electrical

Power Input: 100-240VAC, 1Amp, 47-63Hz
Output: 12V @ 5Amps
Dimensions: 1.125" high x 14" deep x 6.5" wide

Environmental

Operating Temperature: 0°C to 40°C
Storage Temperature: -10°C to 70°C
Relative Humidity: 10% min, 95% max, non-condensing

Fiber Cable Type

Multimode: Corning 50/125µm, 850nm wavelength
Insertion Loss: Network Port: 1.25 dB, Monitoring Port: 1.25dB

Singlemode: Corning 8.5/125µm, 1310nm wavelength
Insertion Loss: Network Port: 1.25 dB Monitoring Port: 1.25dB

Connectors:

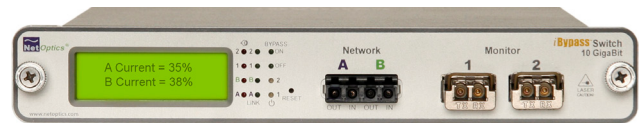
Monitoring Ports: (2) Duplex LC connectors
Network Ports: (2) Duplex LC connectors

10 GigaBit LR to SR Optical Bypass Switch

- (1) RJ45, 8-pin connector (management port)
- (1) Quad Duplex LC connector (Network port)
- (2) 2 Duplex LC connectors (XFP Monitor ports)
- (1) DB9 serial control interfaces

Indicators

- (1) 2x16 Character LCD
- (4) Link LEDs
- (4) Threshold Alarm LEDs
- (2) Power LEDs
- (2) Bypass Indicators



10 GigaBit SR XFP iBypass Switch

Modes

Bypass OFF: Normal operation; traffic flows through attached monitoring device
Bypass ON: During power failure or if the monitoring device cannot pass traffic, the monitoring device is bypassed and traffic flows directly between the network ports; traffic is also mirrored to the monitor ports as if the iBypass Switch were a full-duplex breakout Tap
Tap: The CLI command "set timeout 0" to force Bypass ON mode; the iBypass Switch operates as a full-duplex breakout Tap

Software

Command Line Interface: Any terminal emulation software
iBypass Web Manager: Any browser
iBypass System Manager: Windows 98, Windows 2000, Windows XP

Certifications

Fully RoHS compliant

Part Numbers

- IBPOHB50SRXFP**
10 GigaBit Fiber SR XFP iBypass Switch
- IBPOHBLRXFP**
10 GigaBit Fiber LR XFP iBypass Switch
- IBPOHBERXFP**
10 GigaBit Fiber ER XFP iBypass Switch



Customer First!

5303 Betsy Ross Drive, Santa Clara, CA 95054

+1 (408) 737-7777 • www.netoptics.com

Net Optics® is a trademark of Net Optics, Inc.
 Copyright 2010 Net Optics, Inc. All rights reserved. Revised 02/07