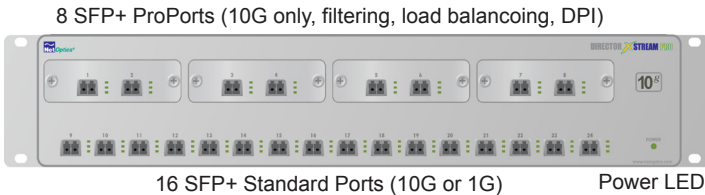


Unpacking and Inspection

Carefully unpack Director xStream Pro™ and retain materials for later use. Check the packing slip and parts list against parts received. If any part is missing or damaged, contact Net Optics Customer Service. (Note: SFP+ and SFP modules are ordered and shipped separately.)



Install SFP+ and SFP modules

Install SFP+ and SFP transceiver modules as desired in the SFP+ cages in the front of the chassis. The 8 ProPorts support only 10G SFP+ modules, while the 16 standard ports support 10G SFP+ and 1G SFP modules. For each module, remove the temporary plug from the SFP+ cage and insert the module until it clicks into place. Unused ports do not need to be populated with transceiver modules.

Rack Mount the Chassis

Director xStream Pro is designed for mounting in a 19-inch rack, occupying two rack units of height.

To mount the Director xStream Pro device:

1. Expand the mounting rails to fit the depth of your rack.
2. Attach the mounting rails to the front and rear pillars of the rack using the supplied screws. The tabs that Director xStream Pro will sit on should be located toward the bottom.
3. Slide the Director xStream Pro chassis into the rack so it rests on the rail tabs.
4. Make sure the rack is properly grounded.

Connect Power

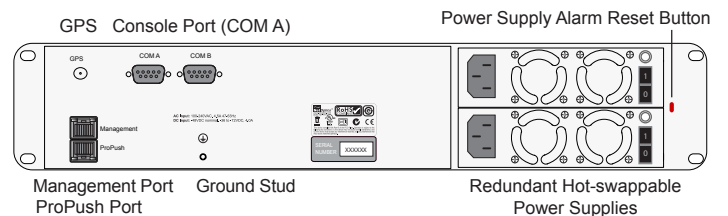
Director xStream Pro's two redundant power supplies can be found at the rear of the unit on the right side. Either power supply can power the unit by itself, or you can connect both power supplies for high availability. If you use both supplies, be sure to connect them to independent power sources.

Use the AC power cords supplied with the product. If you use other AC power cords, they should have a wire gauge of at least 22 and a 230VAC 5A rating. Be sure to use three-prong cords and connect them to sockets with good earth grounds.

To connect input power:

1. Connect the ground stud near the bottom middle of the rear panel to a good earth ground. Usually this will be the same as the equipment rack ground.
2. Connect the AC power cords to the power supplies and plug them into independent power sources.
3. Push the "1" side of the power supplies' switches to activate power. The LEDs on the power supplies illuminate to indicate that power is active.
4. If you power up only a single supply, an alarm tone sounds. Press the red power supply alarm reset button just to the right of the power supplies to turn off the alarm sound.

With DC models of the product, you must supply your own DC power cables. They should have a wire gauge of at least 16 and a 72VDC 4A rating. Always connect the earth grounds first, and keep the earth grounds connected whenever you are working on the device. When disconnecting the device from DC power, remove the earth ground connections last.



Connect to the Network and Tools

Tap the links you want to monitor (using external fiber or copper taps) and plug the outputs of the taps into any Director xStream ports that have SFP+ or SFP modules installed. You can also plug in switch Span ports that you want to monitor.

Plug tools into any Director xStream ports that have SFP+ or SFP modules installed.

Set the Device's IP Address

Before you can use the Director xStream Pro management GUI, you need to configure the unit's management IP address.

To set the device's IP address:

1. Connect a PC with terminal emulation software such as HyperTerminal to Director xStream Pro's COM A port (rear panel) using the supplied DB9 serial cable and null modem (cross-over) adapter.
2. Launch terminal emulation software and set the communication parameters to **115200 baud, 8 data bits, no parity, 1 stop bit, no flow control**.
3. Press the **Enter** key until the command prompt (**cmd>**) appears.
4. Type **ip_address** followed by the desired IP address and netmask to change the IP address for the unit.

```
(cmd> ip_address 192.168.4.181 255.0.0.0
IP address has been set to 192.168.4.181.
Netmask has been set to 255.0.0.0.
(cmd>
```

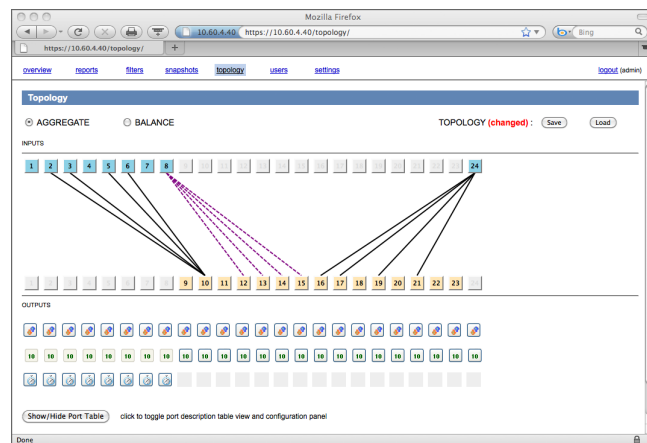
Use the GUI


All configuration options, status, and traffic statistics are accessed using the Director xStream Pro GUI from any Web browser. (Firefox 3.5 or higher recommended. Java Script must be enabled.)

To log into the Director xStream GUI:

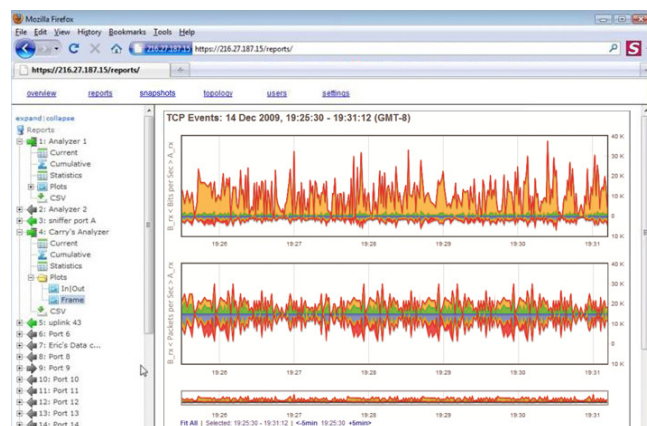
1. Be sure the management port (top RJ45 on the rear panel) is connected to a switch that can be reached by your browser.
2. In the browser's address bar, type **https://** followed by the IP address you assigned to the device, for example, **https://192.168.10.1**. Be sure to type **https** not **http** because a secure connection is required. Click through any security warnings until you get to the login screen. (The warnings do not apply because you are connecting to a hardware appliance, not an Internet Web site.)
3. Log in by entering the user name **admin** and the password **netoptics**. The Director xStream Pro **Overview** screen appears.
4. Use the command links at the top of the GUI window to select different pages in the GUI:
 - Click **Reports** to view and export RMON traffic statistics as tables and charts
 - Click **Filters** to set ingress and egress filters on ProPorts, and to trigger snapshot packet captures
 - Click **Snapshot** to view pcap packet capture files
 - Click **Topology** to configure and interconnect ports
 - Click **Users** to administer user accounts
 - Click **Settings** to change system settings

Topology screen



- Each column represents a port
- Click  to change port from input (blue box) to output (yellow box) and vice-versa
- Click **10** or **1** to change port speed—must match SFP+ (10G) or SFP (1G) module in port (ProPorts 1 - 8 support 10G only)
- Click one input port (blue box) and one output port (yellow box) to connect the ports
- Select **AGGREGATE** to create aggregation and regeneration connections (black lines)
- Select **BALANCE** to create load balance groups (purple dashed lines)—input ports 2, 4, 6, and 8 only

Reports screen



- Select the port and table or plot (chart) type using the left navigation menu

Filters screen

Activate/Deactivate Name Type Action Snapshot Capture Trigger

Activate/Deactivate	Name	Type	Action	Snapshot Capture Trigger		
<input type="checkbox"/>	example_filter	VLAN/IP (TCP OR UDP)	PASS	DROP	BALANCE	<input type="checkbox"/> SNAP
ETHERNET SA: ea:bb:cc:dd:ee:ff DA: 00:11:22:33:44:55 VLAN: 100						
IPv4 SRC: 192.168.0.10 DST: 66.77.88.99 MPLS: 105						
PROTO: TCP SPORT: 80 DPORT: 80						
FLAGS: IGNORE						
PAYLOAD: testPayload						
WORD OFFSET: ANCHORED IGNORECASE						
ANCHORED IGNORECASE						

Control
Specificat
Status and Counters

- Select the port and click **Complex** in the left navigation menu
- Fill in the filter form as desired