



Features

- Device management and configuration
- Rich graphical data visualization
- At-a-glance dashboard views
- Subnet-organized network topology map
- View snapshot and historical data
- Audit trail
- Fault and event management
- Print and export to CSV files
- 1U rack-mount appliance

Benefits

- Easily manage hundreds of monitoring access devices
- Improves network visibility and security threat management
- Monitor traffic levels and quality across the network without monitoring tools
- Centralized access to data from large numbers of devices
- Compatible with Director, Director Pro, and iTap devices
- Quick and simple deployment

Indigo Manager Pro is configured as an appliance in a 1U rack-mount form factor. Deployment is easy because a fast, fully automatic discovery process quickly identifies supported Net Optics devices throughout the network, and continuously checks for new devices added or existing devices removed or taken offline. The Manager Pro network topology map shows the “up” or “down” status of all the devices, and clicking a device drills down into the detailed device status and configuration information, as well as the status of attached links.

Device Management

With Indigo Manager Pro, you have complete control over the data flowing in and out of your traffic access devices. Any port can be downed or brought up with the click of a mouse. The interface also enables setting of device system parameters such as IP address and user accounts. In addition, bulk software upgrades can be scheduled for any number of devices.

Indigo Manager Pro also collects and displays event messages from monitored devices to generate alerts when faults or other important network events occur.

Data Visualization

The Manager Pro server gathers data in real time from Net Optics traffic access devices,

archives it in a database for historical trend analysis, and presents it in rich graphical formats through a Web browser interface. Network professionals as well as casual business users can use Indigo Manager Pro to monitor the health of the network, plan for growth, and anticipate trouble spots.

Traffic statistics include bandwidth utilization, byte and packet counts, errors, and Jumbo frames. They can be viewed on a device-by-device basis. In addition, a dashboard can be configured to confederate the data from multiple links and devices for an at-a-glance overview of network traffic activity.

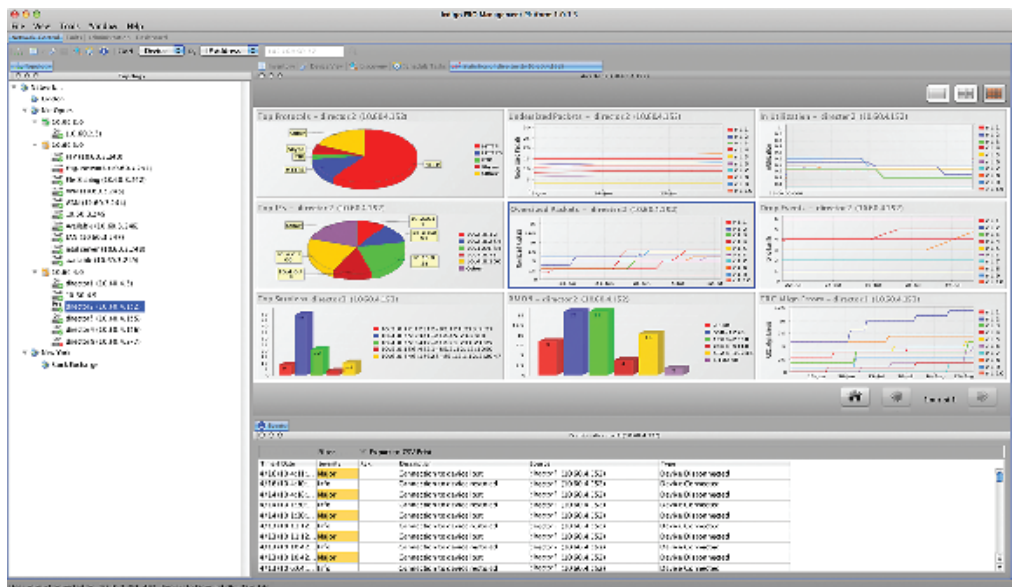
Security and User Management

Indigo Manager Pro offers a complete solution to all NMS security-related issues. The system security is structured in three layers:

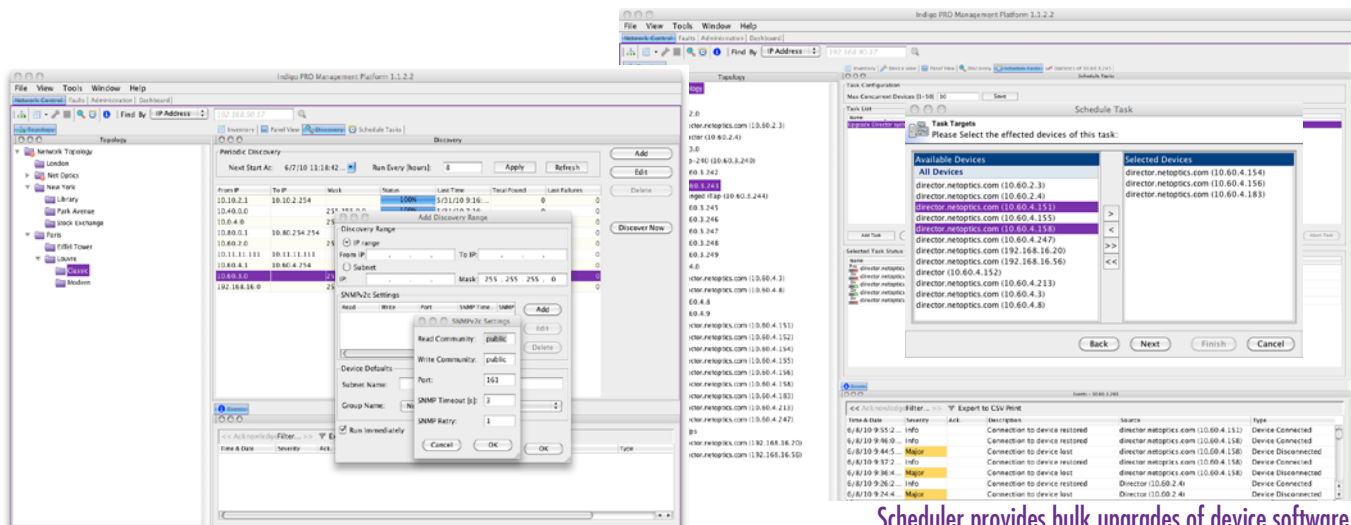
- Authenticated and encrypted sessions between the client Web browsers and the server throughout the users’ entire sessions
- User authentication by a login session based on a user name and password
- All user actions are inspected and audited against a permissions profile and logged to an audit trail

To cope with skyrocketing traffic levels and escalating security threats, today’s networks integrate sophisticated and pervasive monitoring capabilities. As a result, many networks now contain dozens or even hundreds of Tap and data monitoring switch devices comprising a Monitoring Access Platform or MAP within the network infrastructure. But now a new challenge arises: how to manage all of the access devices.

Meet the challenge of managing large monitoring deployments with Indigo Manager Pro, a network management appliance tailored for centralized management of large numbers of Net Optics monitoring access devices. Indigo Manager Pro enables configuration and monitoring of Net Optics Taps, data monitoring switches, and network controller switches, and turns those devices into a comprehensive, distributed traffic monitoring system.



Dashboard views show network status at a glance



Automatic device discovery speeds deployment

Scheduler provides bulk upgrades of device software

The user management facilities offer extensive flexibility and support a virtually unlimited number of users and profiles.

Indigo Pro Suite

Indigo Manager Pro is part of the Indigo Pro Suite of network management tools. The Suite also includes Indigo Collector Pro, an appliance optimized for data collection and visualization. Choose Indigo Collector Pro when your goal is centralized monitoring of link traffic and access device status; choose Indigo Manager Pro for a total management system for your traffic access devices.

Specifications, chassis

Functional

- Device discovery: automatic, fast
- Data visualization: snapshot and historical; utilization, total bytes, total packets, Jumbo packets CRC errors; dashboard views
- Dashboard: up to 18 graphs
- Security: profile-based permissions and views; comprehensive audit trail; role-based access control
- Network topology map: organized by subnet
- Data export: print, export to CSV file

*The following added functions are available with Indigo Manager Pro

- Device management (device dependent): port settings, device system settings, device user accounts
- Event logging and Fault management: device dependent
- Scheduler: schedule bulk device software upgrades

Operating

- Operating Temperature: 10°C to 35°C
- Storage Temperature: -10°C to 70°C
- Relative Humidity: 10% min, 90% max, non-condensing

Mechanical

- Dimensions: 1.75" high x 23.5" deep x 19" wide
- Mounting: 19" rack mount (1U)
- Weight: 26 lbs (11.8kg)

Electrical Specifications

- Power: 100-240VAC, 47-63Hz 650W PFC
- Redundancy: Dual modules
- Maintenance: Power supplies are hot-swappable

Indicators

Power, disk activity, network 1 activity, network 2 activity, over temperature warning

Certifications

FCC, CE, VCCI, and C-Tick certified
Fully RoHS and WEEE compliant

Supported Web Browsers

- Internet Explorer
- Firefox
- Safari

Note: Java support must be enabled in the browser

Supported Devices

- Net Optics Director models
- Net Optics Director Pro models
- Net Optics iTap 10 GigaBit Fiber Port Aggregator
- Net Optics iTap GigaBit Fiber Port Aggregator
- Net Optics iTap Triple-speed Fiber Port Aggregator

Warranty

All products include a 1 year manufacturer's warranty. A service plan with up to 7 years coverage and an advanced replacement option is available.

Part Numbers

- IP-2050C Indigo Collector Pro, 50 nodes
- IP-2100C Indigo Collector Pro, 100 nodes
- IP-2250C Indigo Collector Pro, 250 nodes
- IP-2102C Indigo Collector Pro, 1,000 nodes
- IP-2050M Indigo Manager Pro, 50 nodes
- IP-2100M Indigo Manager Pro, 100 nodes
- IP-2250M Indigo Manager Pro, 250 nodes
- IP-2102M Indigo Manager Pro, 1,000 nodes

*Upgrade path from Indigo Collector Pro to Indigo Manager Pro available upon request



5303 Betsy Ross Drive • Santa Clara, CA 95054
+1 (408) 737-7777

Net Optics® is a trademark of Net Optics, Inc.
Copyright 2010 Net Optics, Inc. All rights reserved.